



the
Logan
PHILADELPHIA'S
HOTEL

THE ART OF MEETINGS

N A L O G L N O L O
L O G A N O L N O L
G N A L A G A L G N
O G A N L A N O A A
O N A L L O G A N O
N L O G A N G L O N
A O L A G O L A G L
A N O L O A N A N O
G L G A N O G A L G
O G A N L N A N O A
A N O A L A G A L N
O L O G A N O L A L
G A L N O N L A G O
O L O A L O G A N A
A N L O G L O G A N

L



PUTTING YOUR MEETING CENTER STAGE. The address – One Logan Square – sets the tone, placing guests in our prime location at the head of Benjamin Franklin Parkway, surrounded by Philadelphia’s foremost business centers. Steps from our stylish enclave, find the best museums, parks, shops and historic treasures the city has to offer – from the fabled Barnes Foundation to the free-flowing Reading Terminal Market to the nationally treasured Liberty Bell. Philadelphia is a city of firsts, both iconic and eclectic, and The Logan mirrors that tradition by bringing its own unique viewpoint to this, Philadelphia’s Hotel – an ideal vantage point for enjoying this vibrant city.

UNIQUE VENUES THAT INSPIRE



BOLD, MODERN AND EXPANSIVE, our meeting venues are many and varied, each built to bring inspiration to the forefront. From the spacious ballroom with its high ceilings and dedicated pre-function space to intriguing outdoor venues that readily effect change in the agenda, The Logan delights planners and meeting-goers with both functionality and diversity. Our magnificent transformation complete, The Logan is a brilliant beacon of modern luxury, reflected in sleek meeting rooms that bear the names of historical estates and an atmosphere that's just right, whether it's the executive committee or the entire sales team in conference. For 30 or 300, the all-new Logan is a commanding place to convene.

CITY-SOPHISTICATED REPOSE DASHED WITH ARTFUL CHARACTER

L



MINGLING EASE AND ALLURE, The Logan's 391 boldly renovated guest rooms and suites are well-curated perfection. Step into your room and feel the embrace of a space choreographed for the cultured — a welcoming sense of tradition touched with modernity and peppered with just-right comfort. Outfitted with plush furnishings, local artwork and high-tech amenities, attendees can kick into work mode or kick back with equal aplomb. In-room coffee – check, in-room refreshment – our pleasure. With a health club below and a rooftop bar above that's serious about its cocktails, we cater to the productive and pleasurable, a maximum reward.

L

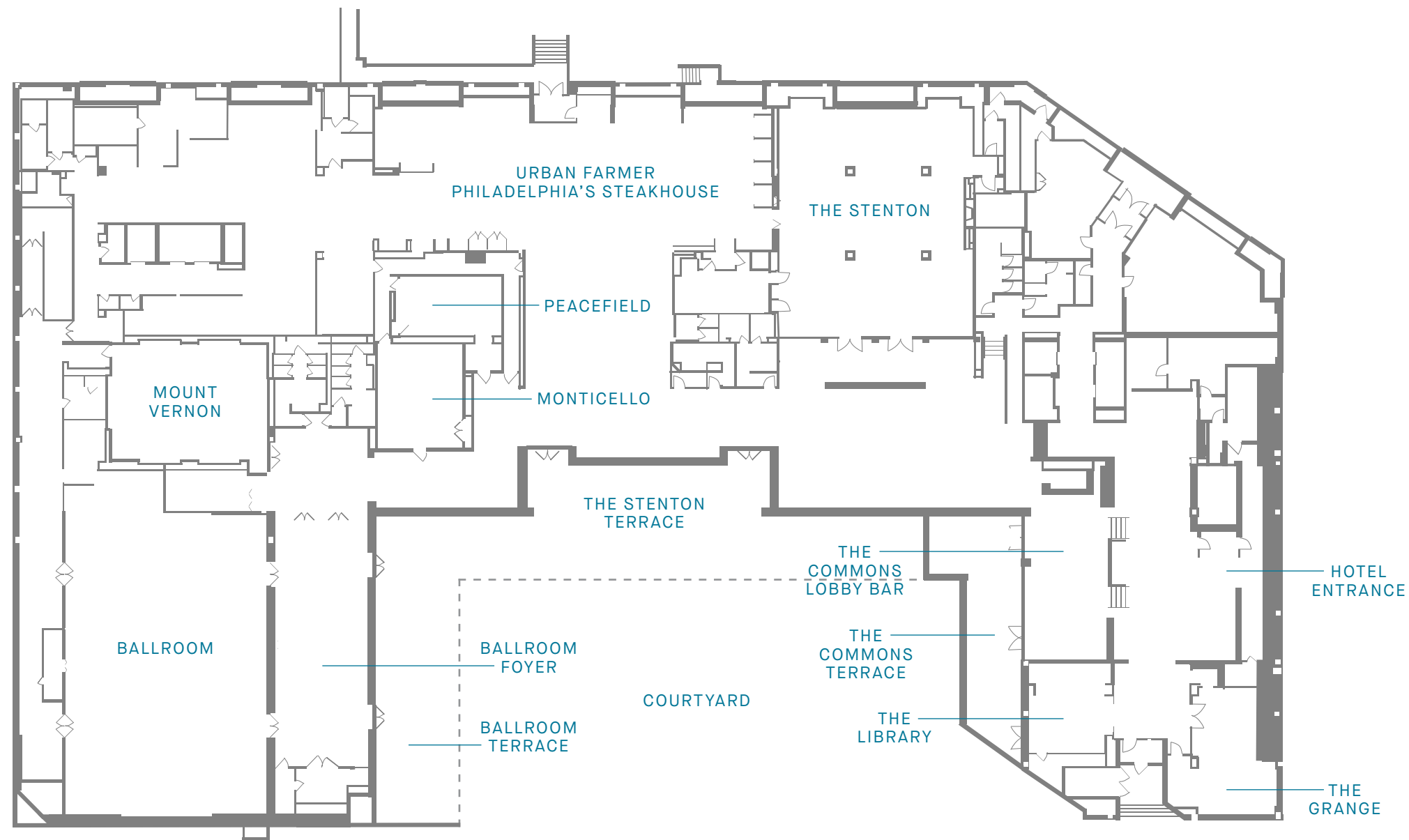


MINGLING EASE & ALLURE

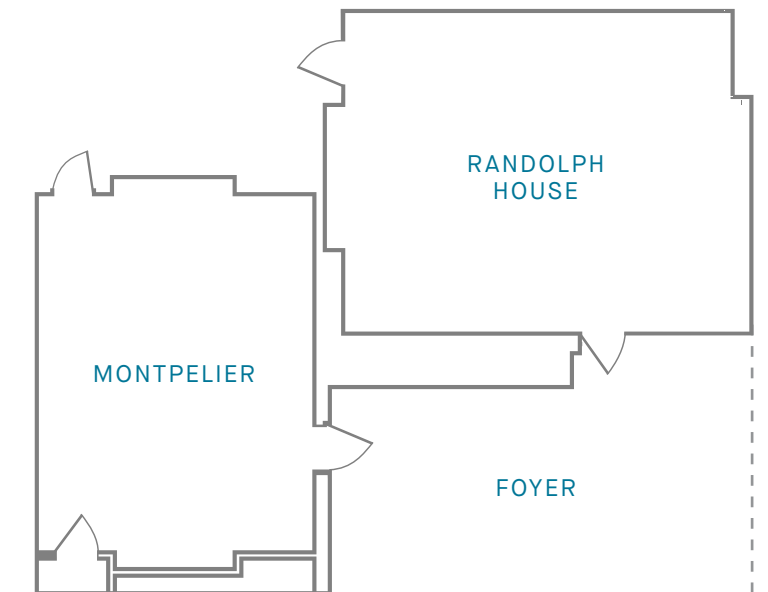


FLOOR PLANS

LOBBY LEVEL



LOWER LOBBY LEVEL



CAPACITY CHART

ROOMS	DIMENSIONS	SIZE (SQ FT)	CLASSROOM	HOLLOW SQUARE	U-SHAPE	THEATER	RECEPTION	BANQUET ROUNDS	CONFERENCE
LOBBY LEVEL									
BALLROOM	54' x 81'	4,374	275	-	-	550	500	380	72
NORTH	54' x 39'	2,106	135	64	47	275	250	150	48
SOUTH	54' x 39'	2,106	135	64	47	275	250	150	48
FOYER	25' x 66'	1,650	-	-	-	-	250	60	-
BALLROOM TERRACE	14' x 68'	952	-	-	-	-	120	-	-
COURTYARD	40' x 100'	4,000	-	-	-	-	500	-	-
THE STENTON	54' x 60'	3,240	153	54	51	300	300	200	48
THE STENTON TERRACE	61' x 23'	1,403	-	-	-	-	150	60	-
MOUNT VERNON	33' x 42'	1,386	80	50	40	150	125	100	36
THE GRANGE	26' x 23'	598	36	30	27	60	75	40	24
MONTICELLO	28' x 23'	644	40	30	24	60	60	40	24
PEACEFIELD BOARDROOM	16' x 26'	416	-	-	-	-	-	-	20
THE LIBRARY	24' x 22'	528	-	-	-	-	25	-	10
LOWER LOBBY LEVEL									
RANDOLPH HOUSE	20' x 24'	480	30	24	24	40	50	40	20
MONTPELIER	22' x 18'	396	20	18	15	30	30	30	18
LOWER LOBBY FOYER	19' x 27'	513	-	-	-	-	50	-	-
FLOORS 2-4									
BOARDROOMS (3)	25' x 16'	400	-	-	-	-	-	-	16



L



WE FIND FOOD & SPIRITS are the lifeblood of a great meeting, and savor the opportunity to infuse them into the agenda. Our menus draw inspiration from the “rural chic” sophistication of exceptional, locally-sourced culinary offerings. Meaning we cater to the highest standards – quite literally. We impress with meals divined from craft ingredients, creative and colorful breaks, matched with outstanding service. With an array of options outside the banquet room, your attendees can partake in artful cuisine prepared early to late, in Urban Farmer Steakhouse, our lobby bar, library, patio, rooftop lounge, or in the privacy of their room.



Our meetings specialists are delighted to help orchestrate an agenda that succeeds in meeting your goals and exceed expectations. At The Logan, we have thoughtfully refined The Art of Meetings, and it is our pleasure to assist in creating the finest gathering imaginable, yours.

ONE LOGAN SQUARE
PHILADELPHIA, PA 19103
215 963 1500
THELOGANHOTEL.COM

 facebook THELOGANHOTEL

 twitter @THELOGANHOTEL

 instagram @THELOGANHOTEL