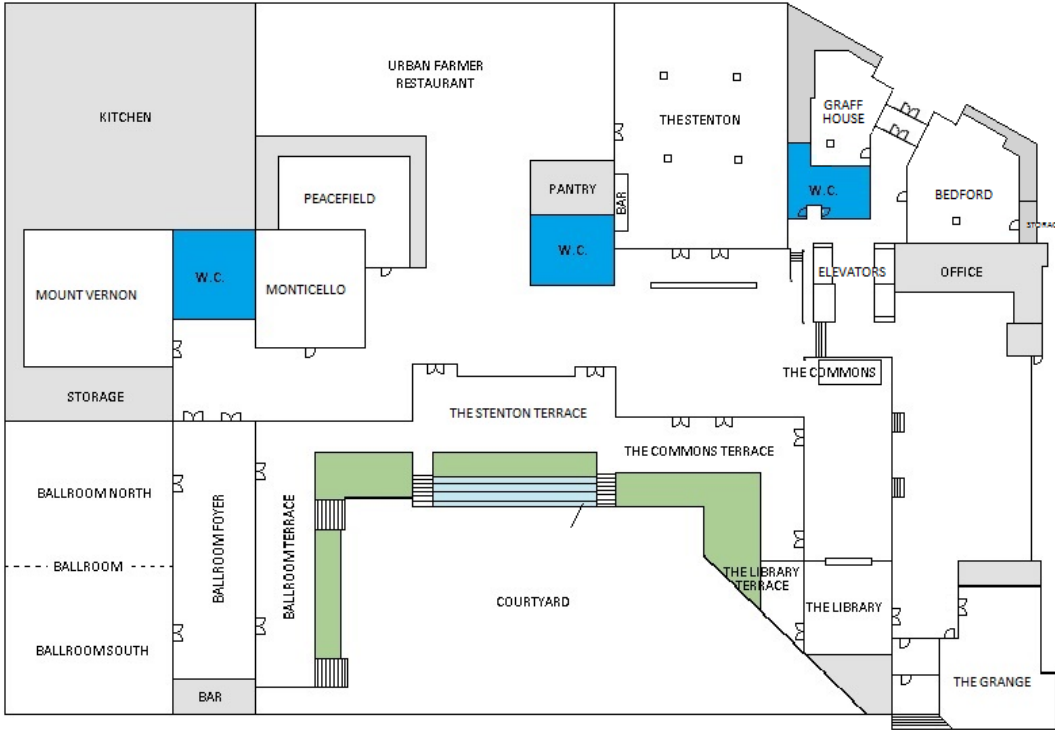


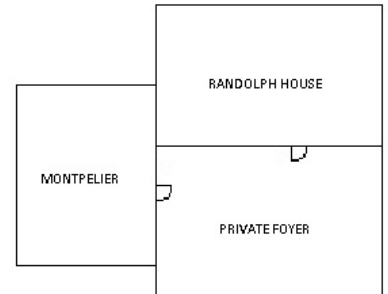
# the Logan

PHILADELPHIA'S HOTEL

## LOBBY LEVEL



## LOWER LEVEL



Rooms	Dimensions	Size (sq.ft.)	Classroom	Hollow Square	U-Shape	Theater	Reception	Banquet Rounds	Conference
<b>Lobby Level</b>									
Ballroom	54' x 81'	4,374	275	-	-	550	500	380	72
North	54' x 39'	2,106	135	64	47	275	250	150	48
South	54' x 39'	2,106	135	64	47	275	250	150	48
Foyer	25' x 66'	1,650	-	-	-	-	250	60	-
Ballroom Terrace	14' x 68'	952	-	-	-	-	120	-	-
Courtyard	40' x 100'	4,000	-	-	-	-	500	-	-
The Stenton	54' x 60'	3,240	153	54	51	300	300	200	48
The Stenton Terrace	61' x 23'	1,403	-	-	-	-	150	60	-
Mount Vernon	33' x 42'	1,386	80	50	40	150	125	100	36
The Grange	26' x 23'	598	36	30	27	60	75	56	24
Monticello	28' x 23'	644	40	30	24	60	60	40	24
Bedford	37' x 23.5'	880							
Graff House	31' x 14'	437							
Peacefield Boardroom	16' x 26'	416	-	-	-	-	-	-	20
The Library	24' x 22'	528	-	-	-	-	25	-	10
<b>Lower Lobby Level</b>									
Randolph House	20' x 24'	480	30	24	24	40	50	40	20
Montpelier	22' x 18'	396	20	18	15	30	30	30	18
Lower Lobby Foyer	19' x 27'	513	-	-	-	-	50	-	-
<b>Floors 2-4</b>									
Boardrooms (3)	25' x 16'	400	-	-	-	-	-	-	16